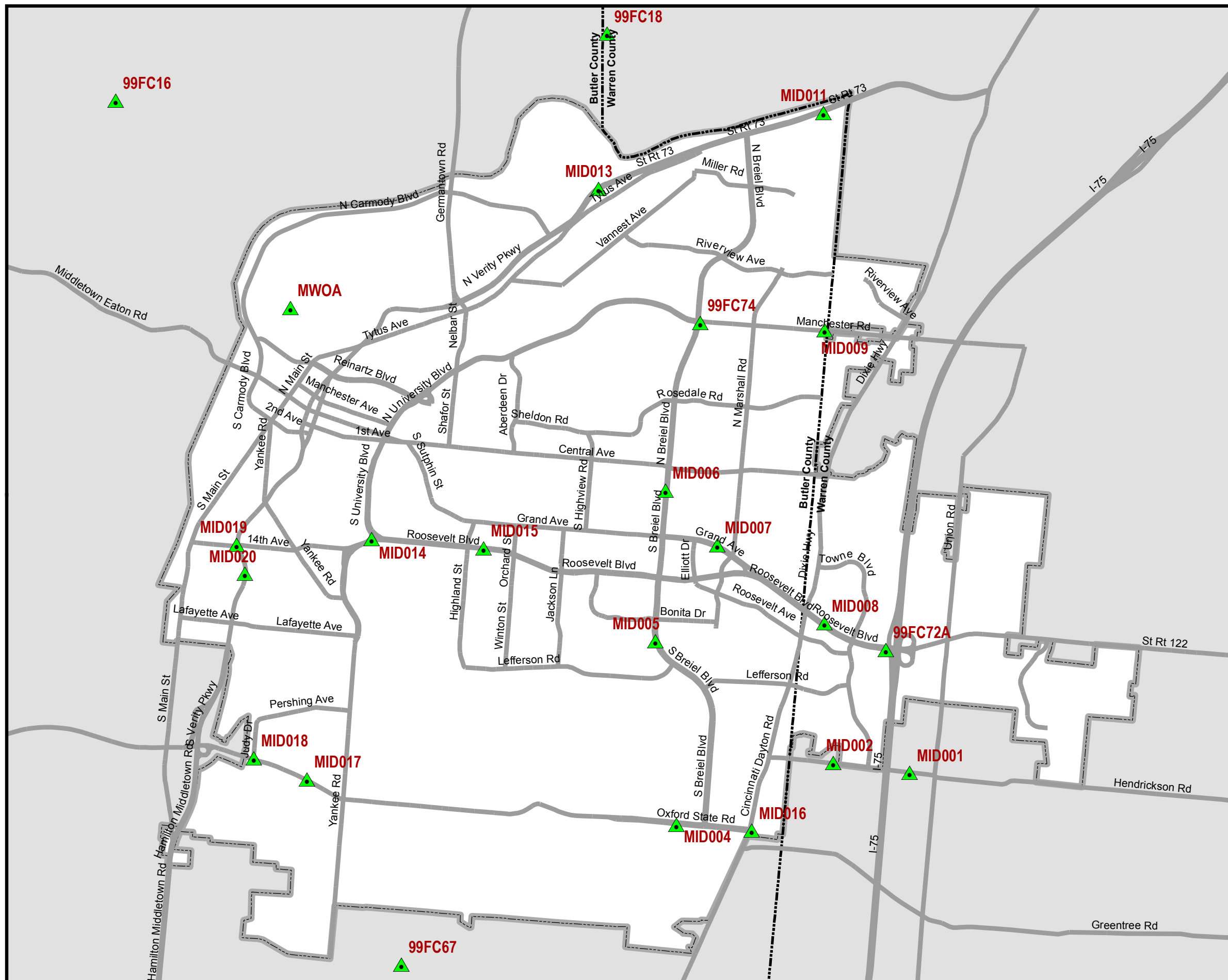








CITY OF MIDDLETOWN, OHIO

**2007 GPS CONTROL
MONUMENTATION REPORT**

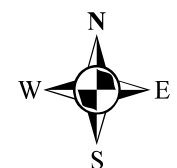


City of Middletown GPS Control Monuments

Legend

-  GPS Monuments
 Major Arterials
 County Line
 City Limits

ID	EASTING	NORTHING	ELEV
99FC16	569206.66998	1424731.04817	897.38
99FC18	571685.146	1442977.74724	665.54
99FC67	537111.09769	1435332.82159	654.97
99FC72A	548796.46802	1453329.74753	692.58
99FC74	560936.95883	1446441.76262	877.04
MID001	544225.11998	1454212.74127	827.69
MID002	544592.80414	1451384.04651	681.81
MID004	542299.50315	1445553.04669	653.74
MID005	549120.00936	1444763.96114	668.02
MID006	554707.18296	1445142.56474	827.71
MID007	552683.96573	1447073.70265	749.38
MID008	549777.63162	1451050.18316	745.27
MID009	560676.25603	1451056.11016	868.18
MID011	568744.27726	1451016.3408	675.14
MID013	565932.51243	1442654.93458	661.08
MID014	552914.45058	1434238.16809	686.38
MID015	552560.47693	1438390.21976	718.56
MID016	542072.48337	1448354.67423	664.42
MID017	543972.83829	1431834.50369	647.87
MID018	544777.58887	1429860.01458	637.79
MID019	552698.02223	1429216.92954	643.65
MID020	551624.87173	1429519.52429	641.96



CITY OF MIDDLETOWN CONTROL MONUMENT RECORD

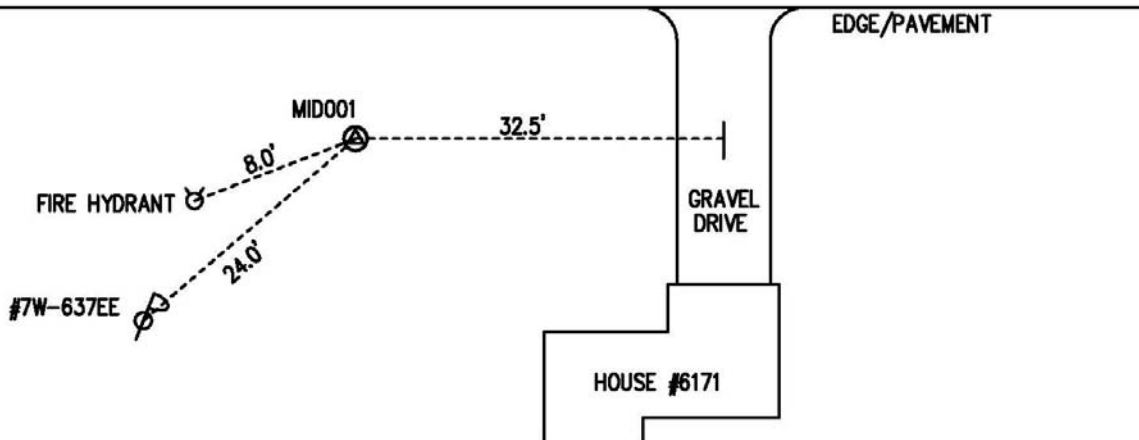
Monument No.	Geographic Coordinates	State Plane Coordinates (U.S. Feet)
MID001	NAD '83	NAD '83 / NAVD 88
	Lat: 39°28'47.95415"	North: 544225.12
	Long: 84°19'19.79234"	East: 1454212.74
	Height: 717.61	Elev: 827.69
Grid Scale Factor: 0.99993730		Convergence: -1°09'22.32"
Bearing To: MID002	Is: N82°35'38.43"W	Distance Is: 2852.49'

Monument Description / Location




EDGE/PAVEMENT

HENDRICKSON ROAD



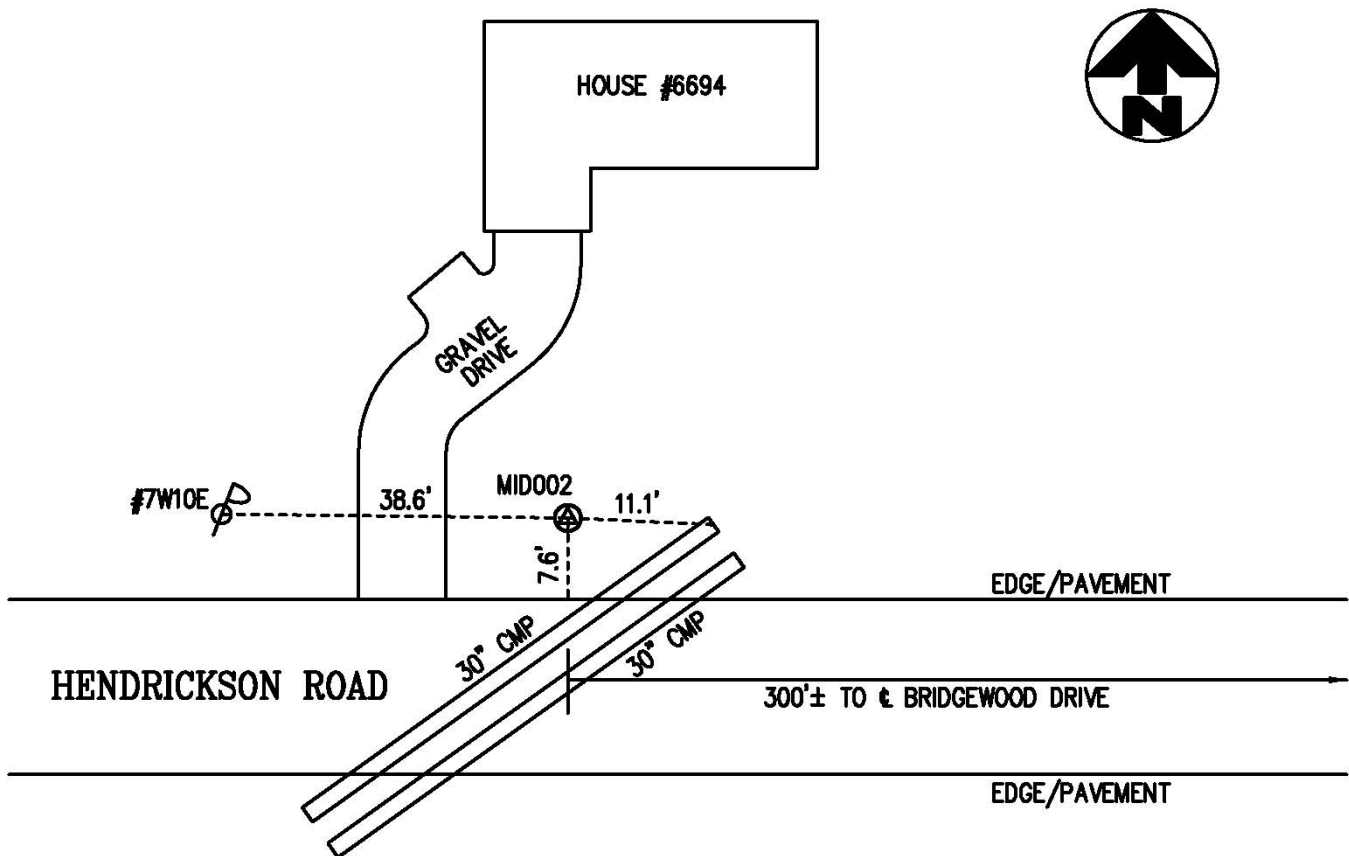
The mark is a concrete monument with a bronze cap located along the south side of Hendrickson Road, approximately 0.16 miles east of the I-75 overpass. The mark is located 32.5 feet west of the centerline of a gravel drive to #6171 Hendrickson Road and is also located 8.0 feet northeast of a fire hydrant.

State Plane Coordinates (Metric)	Note: Horizontal datum is based on NAD 83/1986 (Pre HARN) in conformance with the Butler County Engineers First Order Control Monumentation.	 KLEINGERS & ASSOCIATES ENGINEERS AND SURVEYORS <small>6305 Centre Park Drive, West Chester, OH 45069 (513) 779-7851 • FAX (513) 779-7852</small>
NAD 83 / NAVD 88		
North: 165880.148		
East: 443244.930		
Elev.: 252.279		


CITY OF MIDDLETOWN CONTROL MONUMENT RECORD

Monument No.	Geographic Coordinates	State Plane Coordinates (U.S. Feet)
MID002	NAD '83	NAD '83 / NAVD 88
	Lat: 39°28'51.02183"	North: 544592.80
	Long: 84°19'55.95794"	East: 1451384.05
	Height: 571.72	Elev: 681.81
Grid Scale Factor: 0.99993732		Convergence: -1°09'45.26"
Bearing To: MID001	Is: S82°35'38.43"E	Distance Is: 2852.49'

Monument Description / Location



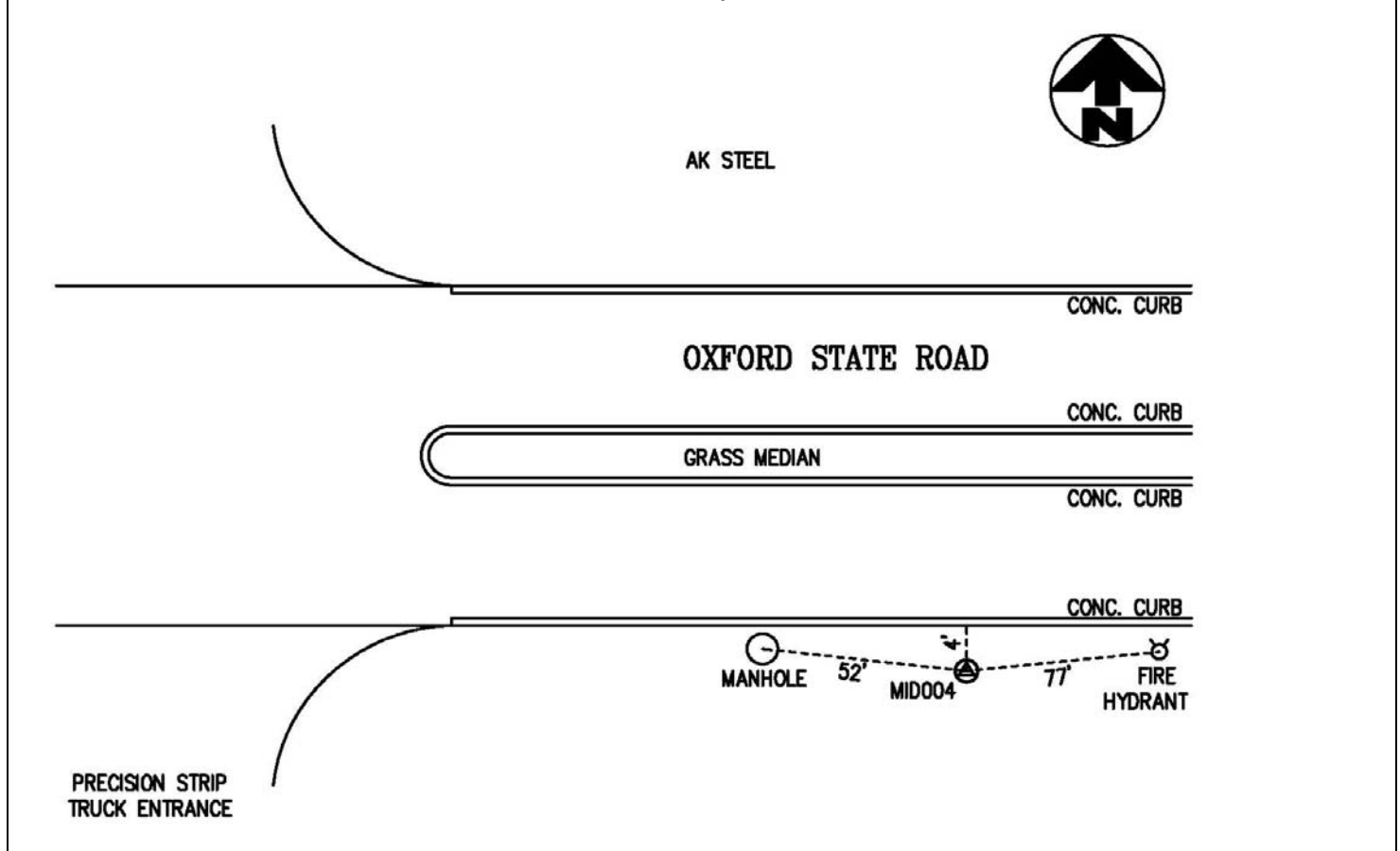
The mark is a concrete monument with a bronze cap located along the north side of Hendrickson Road, approximately 300 feet west of the centerline of Bridgewood Drive. The mark is located 7.6 feet north of the north edge of pavement and 11.1 feet west of the north end of a 30" corrugated metal pipe.

State Plane Coordinates (Metric)	Note: Horizontal datum is based on NAD 83/1986 (Pre HARN) in conformance with the Butler County Engineers First Order Control Monumentation.	 <div>KLEINGERS & ASSOCIATES ENGINEERS AND SURVEYORS 6305 Centre Park Drive, West Chester, OH 45069 (513) 779-7851 • FAX (513) 779-7852</div>
NAD 83 / NAVD 88		
North: 165992.219		
East: 442382.742		
Elev.: 207.816		


CITY OF MIDDLETOWN CONTROL MONUMENT RECORD

Monument No.	Geographic Coordinates	State Plane Coordinates (U.S. Feet)
MID004	NAD '83	NAD '83 / NAVD 88
	Lat: 39°28'27.18403"	North: 542299.50
	Long: 84°21'09.71312"	East: 1445553.05
	Height: 543.61	Elev: 653.74
Grid Scale Factor: 0.99993713		Convergence: -1°10'32.06"
Bearing To: MID016	Is: S85°22'02.51"E	Distance Is: 2810.81'

Monument Description / Location



The mark is a concrete monument with a bronze cap located along the south side of Oxford State Road, approximately 465 feet west from the prolongation of the centerline of the bridge over Dick's Creek, along the south curb of the east bound lane of Oxford State Road. The mark is located 4 feet south from the back of curb and 77 feet west of a fire hydrant.

State Plane Coordinates (Metric)	Note: Horizontal datum is based on NAD 83/1986 (Pre HARN) in conformance with the Butler County Engineers First Order Control Monumentation.	
NAD 83 / NAVD 88		
North: 165293.219		
East: 440605.450		
Elev.: 199.262		

CITY OF MIDDLETOWN CONTROL MONUMENT RECORD

Monument No.	Geographic Coordinates	State Plane Coordinates (U.S. Feet)
MID005	NAD '83	NAD '83 / NAVD 88
	Lat: 39°29'34.42247"	North: 549120.01
	Long: 84°21'21.56209"	East: 1444763.96
	Height: 557.98	Elev: 668.02
Grid Scale Factor: 0.99993770		Convergence: -1°10'39.58"
Bearing To: MID006	Is: N03°52'35.79"E	Distance Is: 5599.99'

Monument Description / Location



CONCRETE CURB

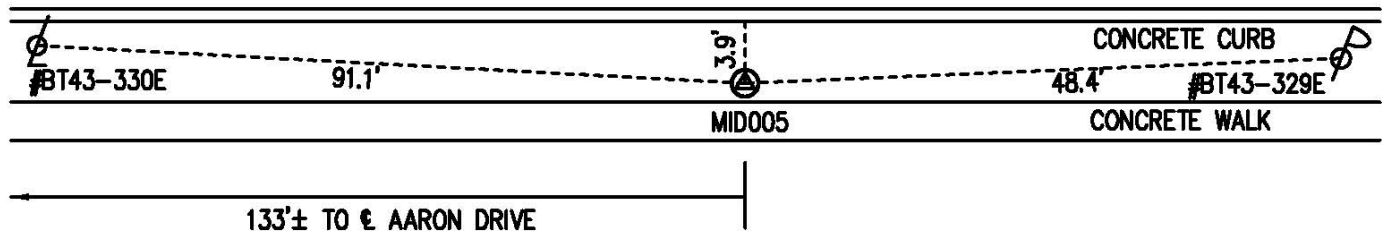
S. BREIEL BOULEVARD (NORTHBOUND)

CONCRETE CURB


GRASS MEDIAN

CONCRETE CURB

S. BREIEL BOULEVARD (SOUTHBOUND)



The mark is a concrete monument with a bronze cap located along the west side of Breiel Boulevard, approximately 133 feet south of the centerline of Aaron Drive. The mark is located 3.9 feet west from the west back of curb of the south bound lane, 91.1 feet from a light pole (BT43-330E) to the north and 48.4 feet from a power pole (BT43-329E) to the south.

State Plane Coordinates (Metric)	Note: Horizontal datum is based on NAD 83/1986 (Pre HARN) in conformance with the Butler County Engineers First Order Control Monumentation.	 KLEINGERS & ASSOCIATES <small>ENGINEERS AND SURVEYORS 6305 Centre Park Drive, West Chester, OH 45069 (513) 779-7851 • FAX (513) 779-7852</small>
NAD 83 / NAVD 88		
North: 167372.114		
East: 440364.936		
Elev.: 203.613		

CITY OF MIDDLETOWN CONTROL MONUMENT RECORD

Monument No.	Geographic Coordinates	State Plane Coordinates (U.S. Feet)
MID006	NAD '83	NAD '83 / NAVD 88
	Lat: 39°30'29.71026"	North: 554707.18
	Long: 84°21'18.19753"	East: 1445142.56
	Height: 717.74	Elev: 827.71
Grid Scale Factor: 0.99993824		Convergence: -1°10'37.45"
Bearing To: MID005	Is: S03°52'35.79"W	Distance Is: 5599.99'

Monument Description / Location

HOUSE #117



CONC. WALK

CONC. CURB

S. BREIEL BOULEVARD (NORTHBOUND)

CONC. CURB



GRASS MEDIAN

CONC. CURB

S. BREIEL BOULEVARD (SOUTHBOUND)

MANHOLE

CATCH BASIN

CONC.
APRON

29.5'
9.5'
2.0'

MID006

CONC. CURB

CONC. WALK

ASPHALT PARKING LOT

The mark is a concrete monument with a bronze cap located along the west side of Breiel Boulevard, approximately 0.12 miles north of the centerline of Batsey Drive. The mark is located 2.0 feet east from the face of a concrete walk, 9.5 feet from a catch basin to the northeast and 29.5 feet from a manhole to the east.

State Plane Coordinates (Metric)

NAD 83 / NAVD 88
North: 169075.088
East: 440480.335
Elev.: 252.287

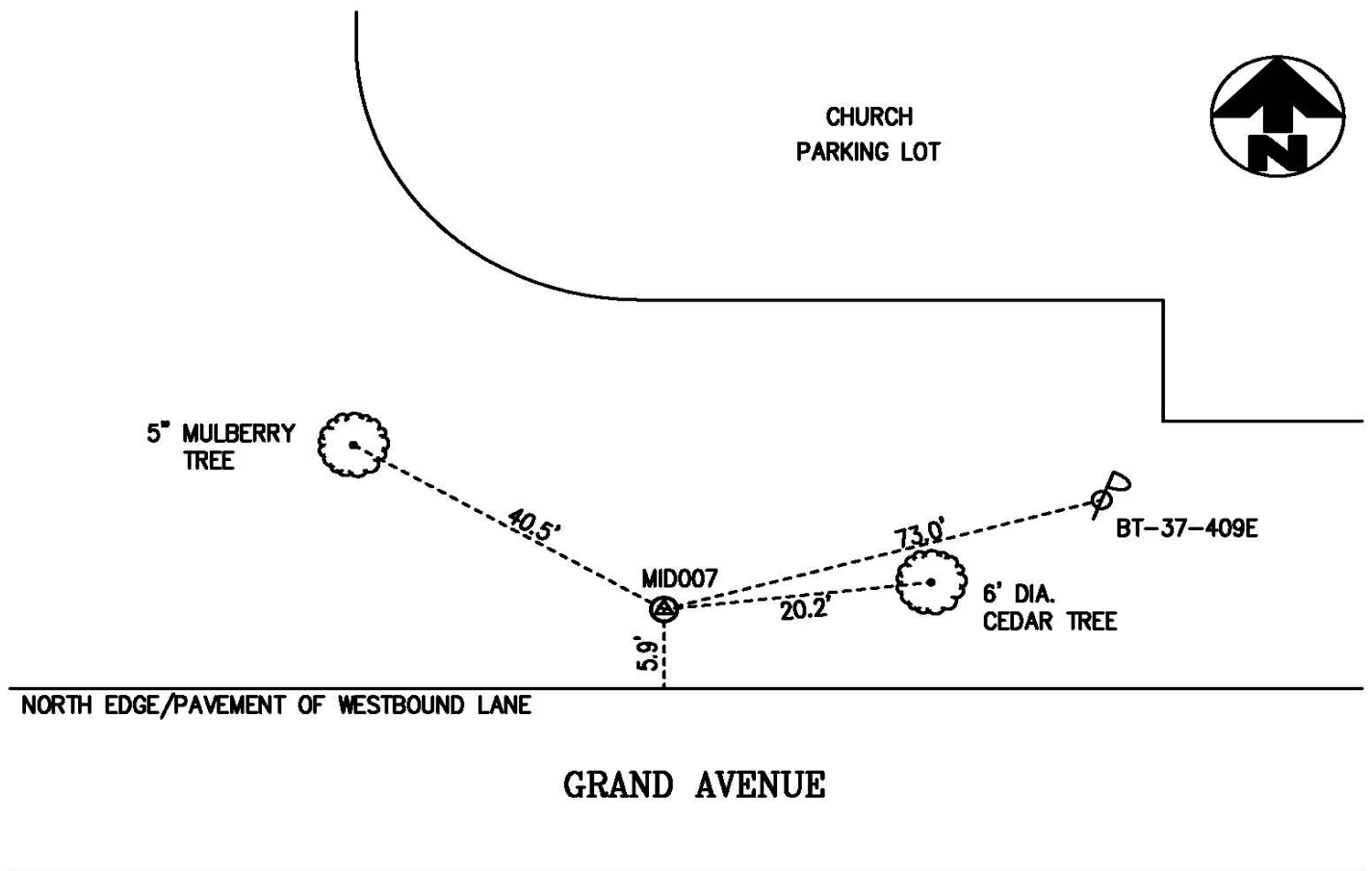
Note: Horizontal datum is based on NAD 83/1986 (Pre HARN) in conformance with the Butler County Engineers First Order Control Monumentation.




CITY OF MIDDLETOWN CONTROL MONUMENT RECORD

Monument No.	Geographic Coordinates	State Plane Coordinates (U.S. Feet)
MID007	NAD '83	NAD '83 / NAVD 88
	Lat: 39°30'10.10874"	North: 552683.97
	Long: 84°20'53.03422"	East: 1447073.70
	Height: 639.39	Elev: 749.38
Grid Scale Factor: 0.99993804		Convergence: -1°10'21.48"
Bearing To: MID008	Is: S53°50'15.50"E	Distance Is: 4925.36'

Monument Description / Location



The mark is a concrete monument with a bronze cap located along the north side of Grand Avenue, approximately 0.13 miles west of the centerline of Marshall Road. The mark is located 5.9 feet north from the north edge of pavement of the west bound lane, 40.5 feet from a 5" tree to the northwest and 73.0 feet from a power pole (BT-37-409E) to the northeast.

State Plane Coordinates (Metric)	Note: Horizontal datum is based on NAD 83/1986 (Pre HARN) in conformance with the Butler County Engineers First Order Control Monumentation.	 KLEINGERS & ASSOCIATES ENGINEERS AND SURVEYORS 6305 Centre Park Drive, West Chester, OH 45069 (513) 779-7851 • FAX (513) 779-7852
NAD 83 / NAVD 88		
North: 168458.410		
East: 441068.947		
Elev.: 228.412		

CITY OF MIDDLETOWN CONTROL MONUMENT RECORD

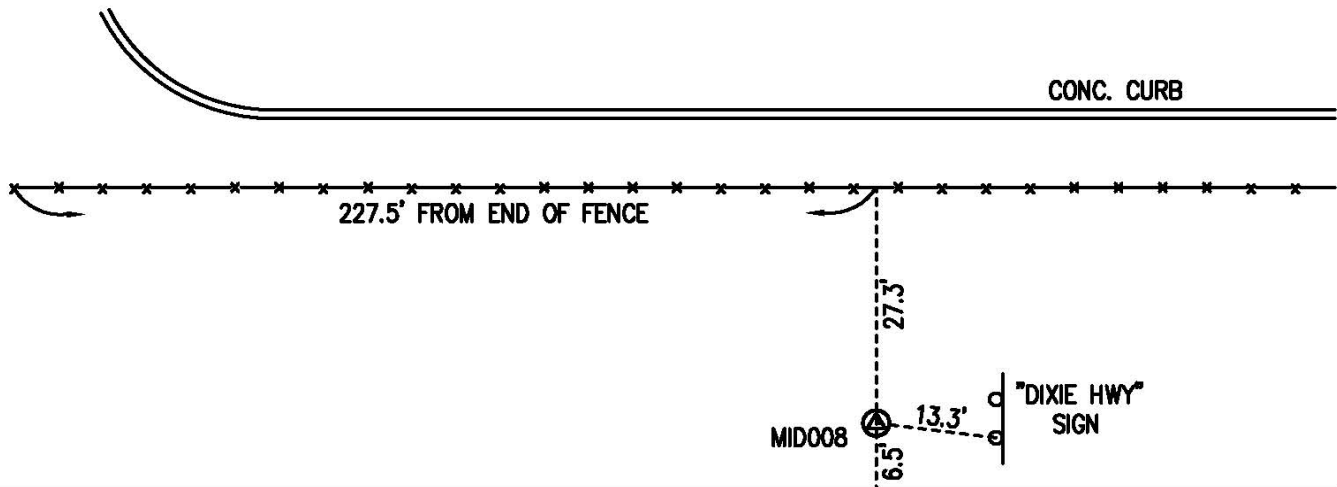
Monument No.	Geographic Coordinates	State Plane Coordinates (U.S. Feet)
MID008	NAD '83	NAD '83 / NAVD 88
	Lat: 39°29'42.19027"	North: 549777.63
	Long: 84°20'01.55815"	East: 1451050.18
	Height: 635.25	Elev: 745.27
Grid Scale Factor: 0.99993777		Convergence: -1°09'48.82"
Bearing To: MID007	Is: N53°50'15.50"W	Distance Is: 4925.36'

Monument Description / Location



TOWNE MALL PARKING LOT


CONC. CURB



NORTH EDGE/PAVEMENT OF WESTBOUND LANE

STATE ROUTE 122

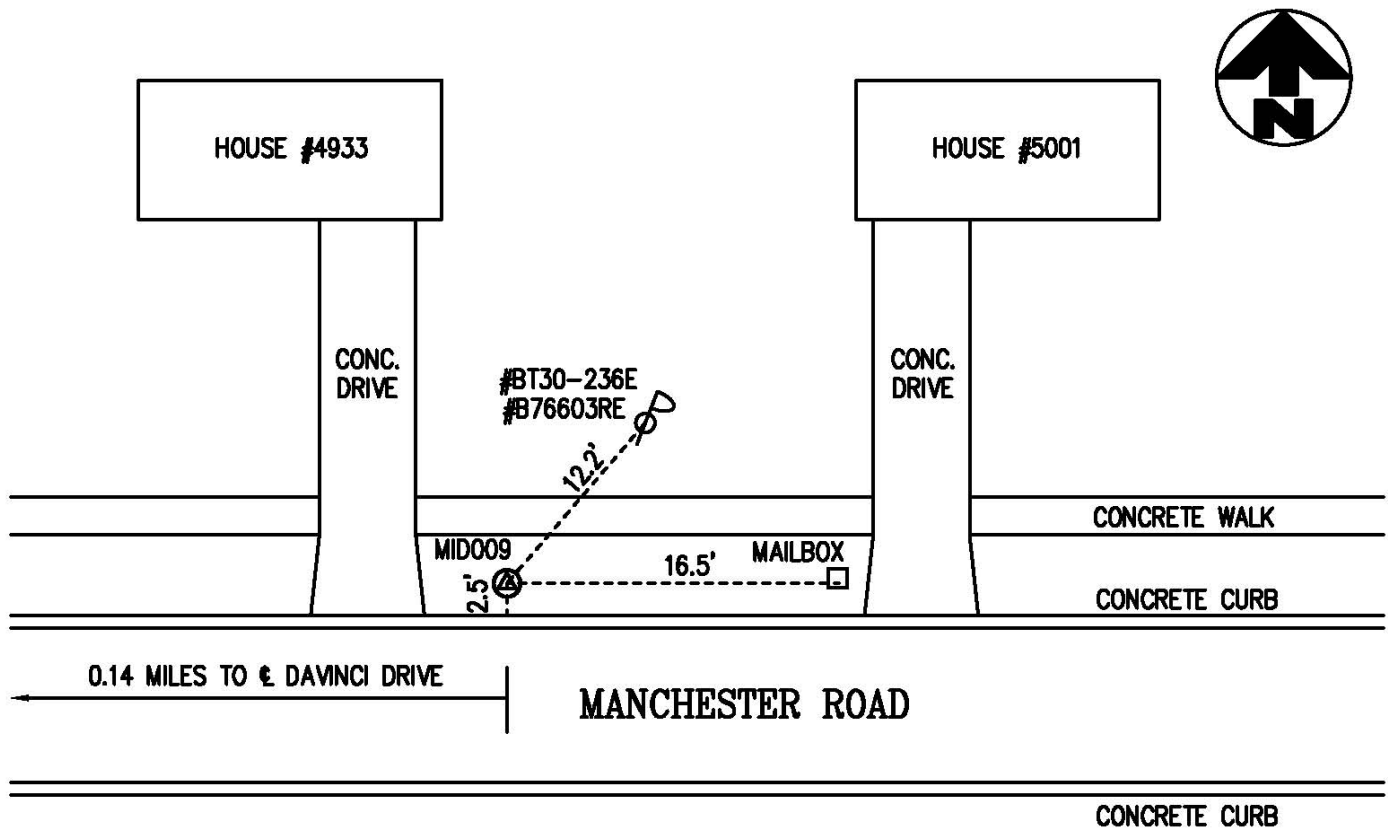
The mark is a concrete monument with a bronze cap located along the north side of State Route 122, approximately 0.12 miles east of Cincinnati-Dayton Road. The mark is located 6.5 feet north from the north edge of pavement of the west bound lane, 13.3 feet from road sign to the east and 27.3 feet from a fence line to the north.

State Plane Coordinates (Metric)	Note: Horizontal datum is based on NAD 83/1986 (Pre HARN) in conformance with the Butler County Engineers First Order Control Monumentation	 KLEINGERS & ASSOCIATES <small>ENGINEERS AND SURVEYORS 6305 Centre Park Drive, West Chester, OH 45069 (513) 779-7851 • FAX (513) 779-7852</small>
NAD 83 / NAVD 88		
North: 167572.56		
East: 442280.980		
Elev.: 227.159		


CITY OF MIDDLETOWN CONTROL MONUMENT RECORD

Monument No.	Geographic Coordinates	State Plane Coordinates (U.S. Feet)
MID009	NAD '83	NAD '83 / NAVD 88
	Lat: 39°31'29.88893	North: 560676.26
	Long: 84°20'04.30702	East: 1451056.11
	Height: 758.29	Elev: 868.18
Grid Scale Factor: 0.99993891		Convergence: -1°09'50.56"
Bearing To: 99FC74	Is: N86°45'58.76"W	Distance Is: 4621.71'

Monument Description / Location



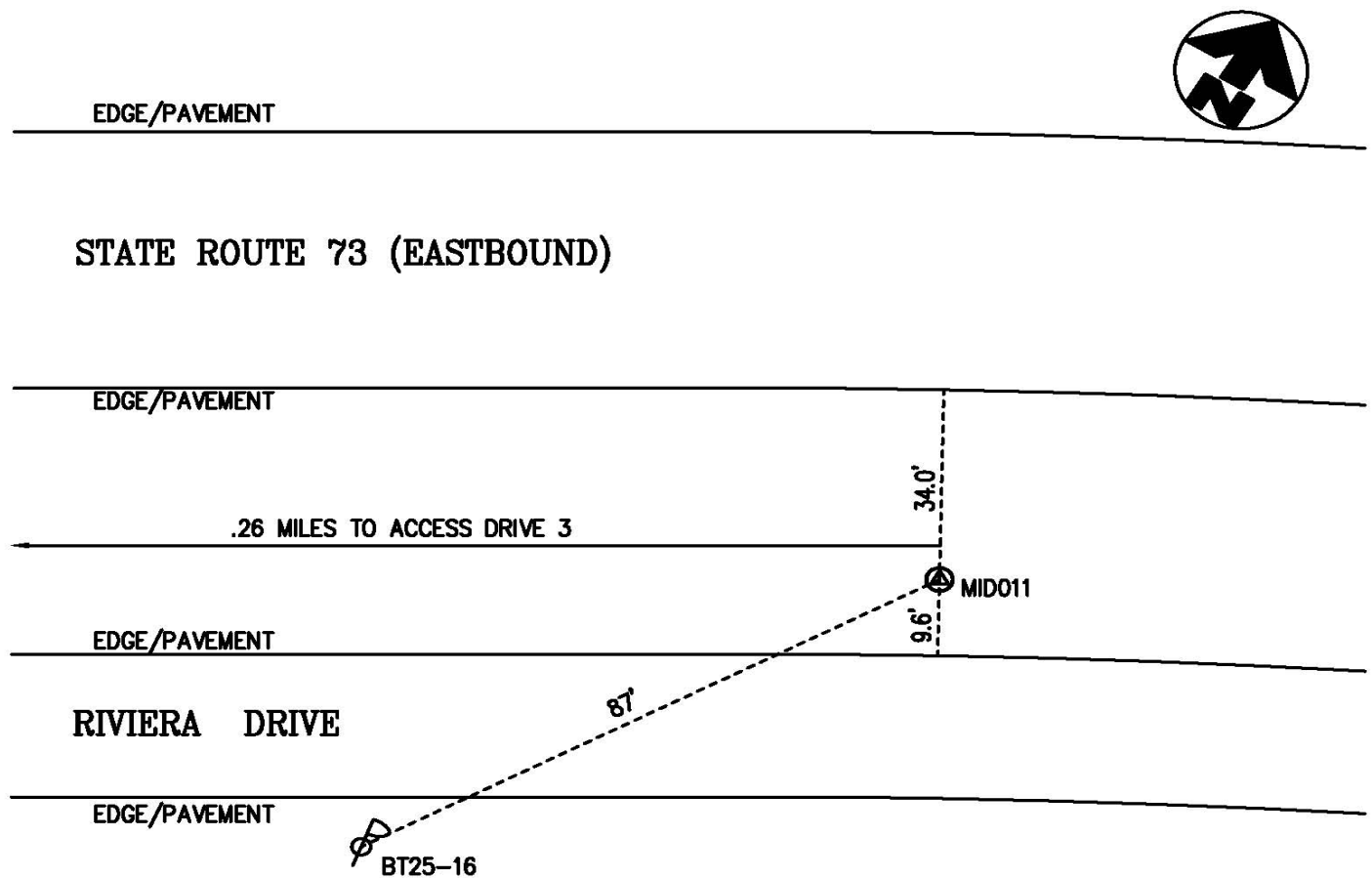
The mark is a concrete monument with a bronze cap located along the north side of Manchester Road, approximately 0.14 miles east of DaVinci Drive. The mark is located 2.5 feet north from the north back of curb of the west bound lane, 16.5 feet from a mailbox at house #5001 to the east and 12.2 feet from a power pole (BT30-236E & B76603RE) to the northeast.

State Plane Coordinates (Metric)	Note: Horizontal datum is based on NAD 83/1986 (Pre HARN) in conformance with the Butler County Engineers First Order Control Monumentation	 <p>KLEINGERS & ASSOCIATES ENGINEERS AND SURVEYORS 6305 Centre Park Drive, West Chester, OH 45069 (513) 779-7851 • FAX (513) 779-7852</p>
NAD 83 / NAVD 88		
North: 170894.465		
East: 442282.787		
Elev.: 264.621		


CITY OF MIDDLETOWN CONTROL MONUMENT RECORD

Monument No.	Geographic Coordinates	State Plane Coordinates (U.S. Feet)
MIDO11	NAD '83	NAD '83 / NAVD 88
	Lat: 39°32'49.60665"	North: 568744.28
	Long: 84°20'06.90709"	East: 1451016.34
	Height: 565.34	Elev: 675.14
Grid Scale Factor: 0.99993993		Convergence: -1°09'52.21"
Bearing To: MID013	Is: S71°24'47.85"W	Distance Is: 8821.52'

Monument Description / Location



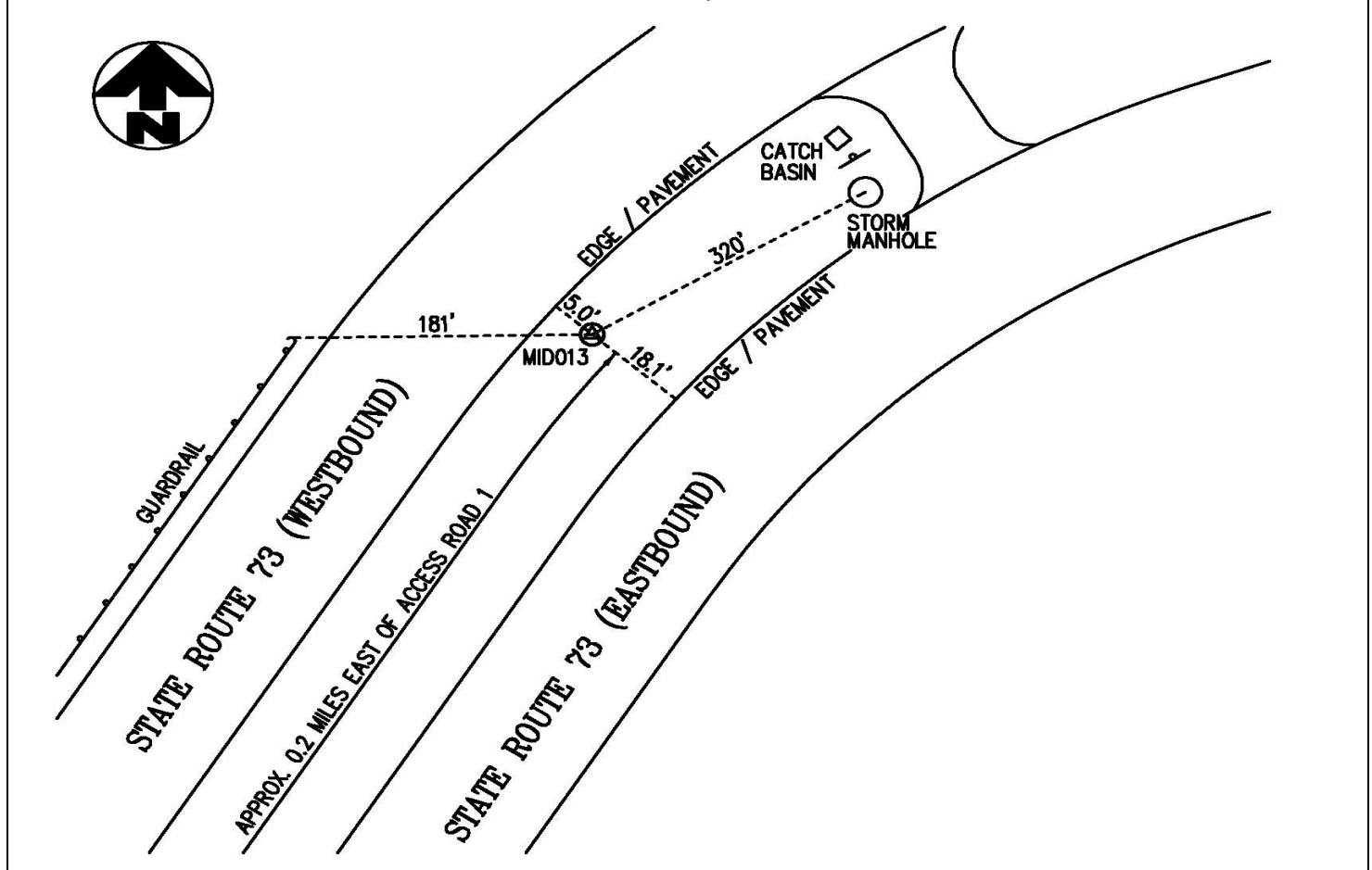
The mark is a concrete monument with a bronze cap located along the north side of Riviera Drive, approximately 0.26 miles east of Access Drive 3. The mark is located 9.6 feet north from the north edge of pavement of Riviera Drive, 34.0 feet from the south edge of pavement of the east bound lane of State Route 73 and 87 feet from a power pole (BT25-16) to the south.

State Plane Coordinates (Metric) NAD 83 / NAVD 88 North: 173353.602 East: 442270.665 Elev.: 205.782	Note: Horizontal datum is based on NAD 83/1986 (Pre HARN) in conformance with the Butler County Engineers First Order Control Monumentation	 KLEINGERS & ASSOCIATES ENGINEERS AND SURVEYORS <small>6305 Centre Park Drive, West Chester, OH 45069 (513) 779-7851 • FAX (513) 779-7852</small>
--	---	--


CITY OF MIDDLETOWN CONTROL MONUMENT RECORD

Monument No.	Geographic Coordinates	State Plane Coordinates (U.S. Feet)
MID013	NAD '83	NAD '83 / NAVD 88
	Lat: 39°32'20.12879"	North: 565932.51
	Long: 84°21'52.88895"	East: 1442654.93
	Height: 551.22	Elev: 661.08
Grid Scale Factor: 0.99993953		Convergence: -1°10'59.46"
Bearing To: MID011	Is: N71°24'47.85"E	Distance Is: 8821.52'

Monument Description / Location



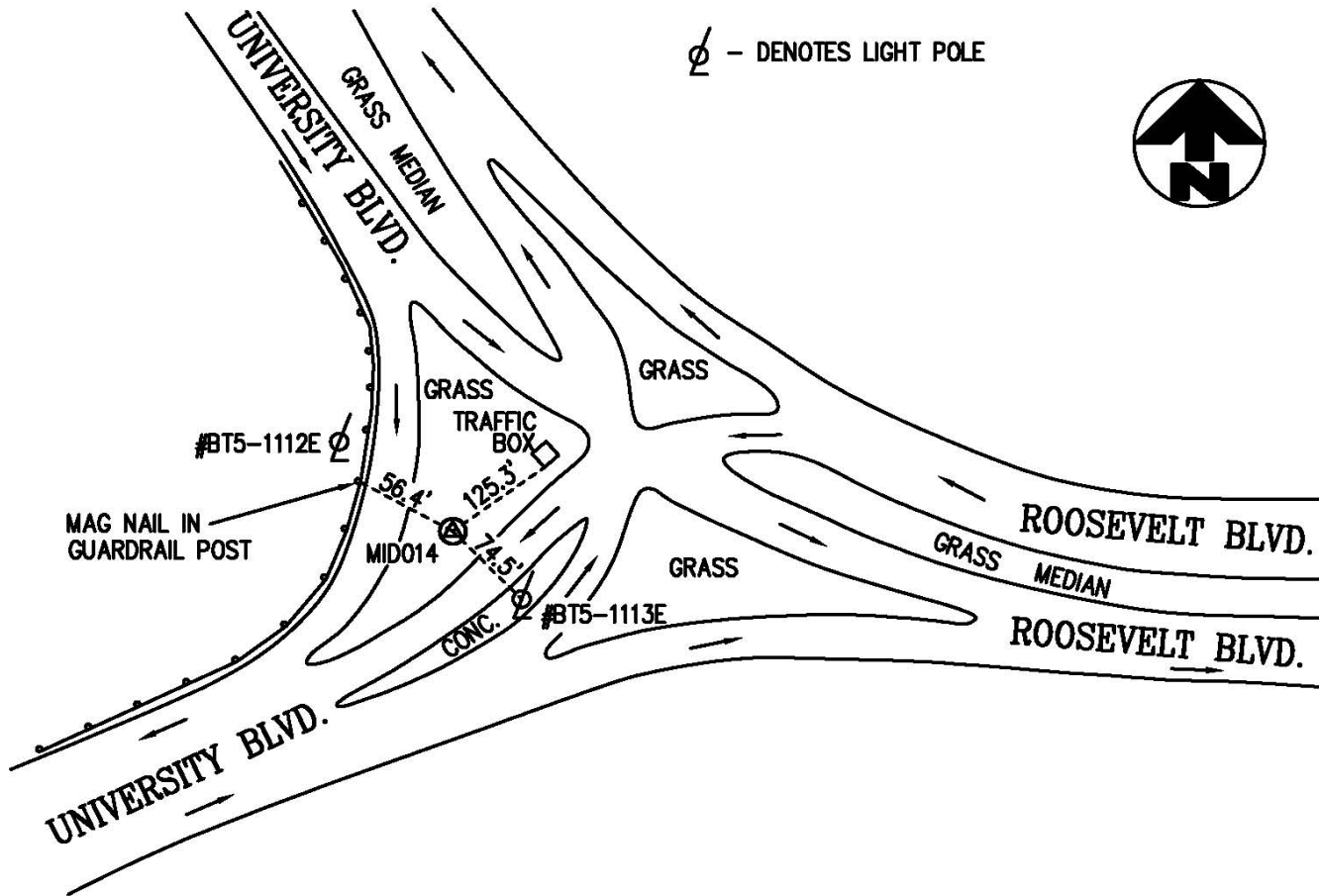
The mark is a concrete monument with a bronze cap located in the median of State Route 73, approximately 0.2 miles east of Access Drive 1. The mark is located 5.0 feet south from the easterly edge of pavement of the west bound lane, 18.1 feet north from the westerly edge of pavement of the east bound lane and 320 feet from a storm manhole to the east.

State Plane Coordinates (Metric)	Note: Horizontal datum is based on NAD 83/1986 (Pre HARN) in conformance with the Butler County Engineers First Order Control Monumentation	 KLEINGERS & ASSOCIATES ENGINEERS AND SURVEYORS 6305 Centre Park Drive, West Chester, OH 45069 (513) 779-7851 • FAX (513) 779-7852
NAD 83 / NAVD 88		
North: 172496.574		
East: 439722.104		
Elev.: 201.496		


CITY OF MIDDLETOWN CONTROL MONUMENT RECORD

Monument No.	Geographic Coordinates	State Plane Coordinates (U.S. Feet)
MID014	NAD '83	NAD '83 / NAVD 88
	Lat: 39°30'09.75811"	North: 552914.45
	Long: 84°23'36.82088"	East: 1434238.17
	Height: 576.40	Elev: 686.38
Grid Scale Factor: 0.99993803		Convergence: -1°12'05.41"
Bearing To: MID015	Is: S85°07'37.78"E	Distance Is: 4167.11'

Monument Description / Location



The mark is a concrete monument with a bronze cap located in the median of the University Blvd. / Roosevelt Blvd. interchange. The mark is located 74.5 feet from a light pole (BT5-113E) to the southeast, 125.3 feet from a traffic box to the northeast and 56.4 feet from a guardrail post with a Mag Nail (being the first guardrail post south of light pole (BT5-1112E)).

State Plane Coordinates (Metric)	Note: Horizontal datum is based on NAD 83/1986 (Pre HARN) in conformance with the Butler County Engineers First Order Control Monumentation	 KLEINGERS & ASSOCIATES <small>ENGINEERS AND SURVEYORS 6305 Centre Park Drive, West Chester, OH 45069 (513) 779-7851 • FAX (513) 779-7852</small>
NAD 83 / NAVD 88		
North: 168528.662		
East: 437156.668		
Elev.: 209.208		

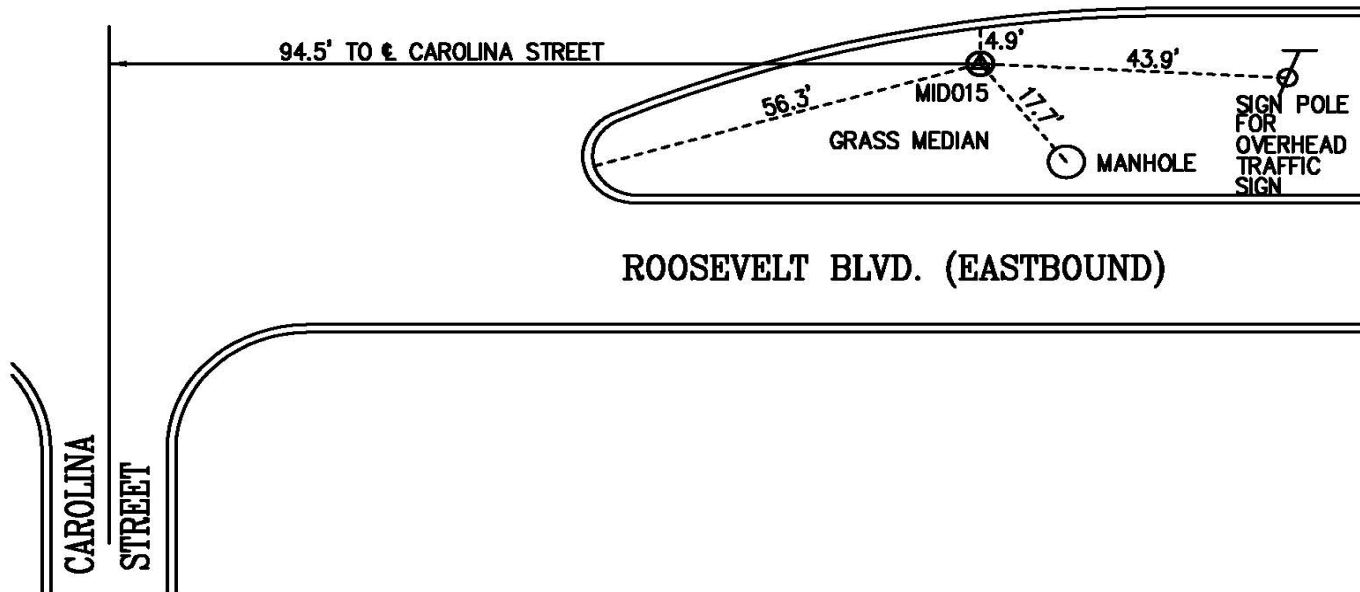
CITY OF MIDDLETOWN CONTROL MONUMENT RECORD

Monument No.	Geographic Coordinates	State Plane Coordinates (U.S. Feet)
MID015	NAD '83	NAD '83 / NAVD 88
	Lat: 39°30'07.11743"	North: 552560.48
	Long: 84°22'43.76489"	East: 1438390.22
	Height: 608.57	Elev: 718.56
Grid Scale Factor: 0.99993801		Convergence: -1°11'31.74"
Bearing To: MID014	Is: N85°07'37.78"W	Distance Is: 4167.11'

Monument Description / Location




ROOSEVELT BLVD. (WESTBOUND)



ROOSEVELT BLVD. (EASTBOUND)

The mark is a concrete monument with a bronze cap located in the median of Roosevelt Boulevard, approximately 94.5 east of the centerline of Carolina Street. The mark is located 43.9 feet from a pole (for overhead traffic signage) to the east, 4.9 feet from the south back of curb of the west bound lane and 17.7 feet from a manhole to the southeast.

State Plane Coordinates (Metric)	Note: Horizontal datum is based on NAD 83/1986 (Pre HARN) in conformance with the Butler County Engineers First Order Control Monumentation	 KLEINGERS & ASSOCIATES <small>ENGINEERS AND SURVEYORS 6305 Centre Park Drive, West Chester, OH 45069 (513) 779-7851 • FAX (513) 779-7852</small>
NAD 83 / NAVD 88		
North: 168420.770		
East: 438422.216		
Elev.: 219.018		

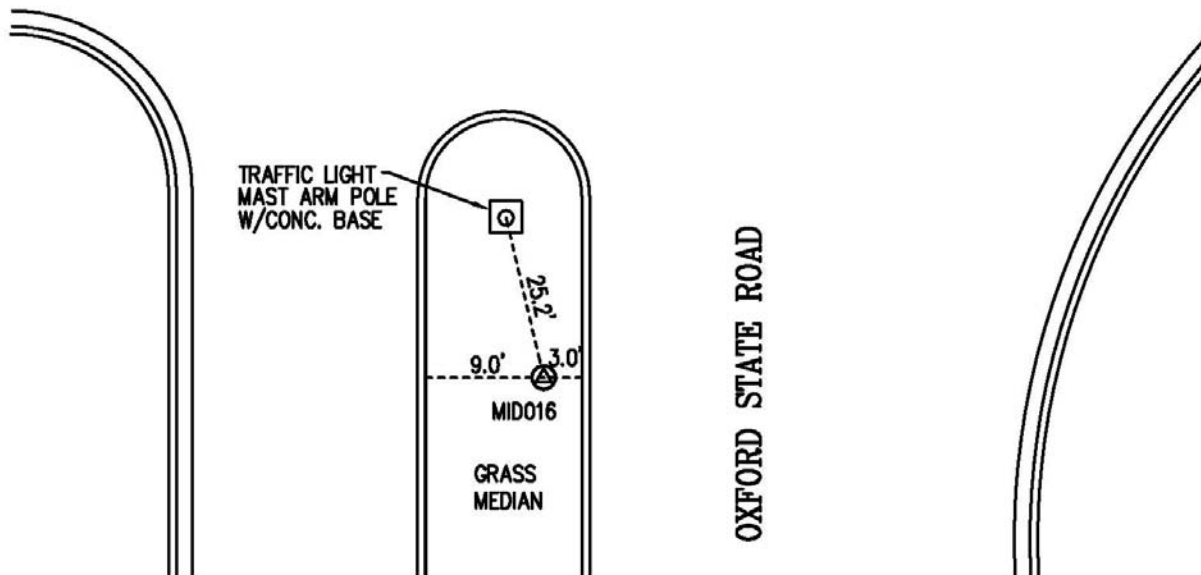
CITY OF MIDDLETOWN CONTROL MONUMENT RECORD

Monument No.	Geographic Coordinates	State Plane Coordinates (U.S. Feet)
MID016	NAD '83	NAD '83 / NAVD 88
	Lat: 39°28'25.50726"	North: 542072.48
	Long: 84°20'33.93177"	East: 1448354.67
	Height: 554.29	Elev: 664.42
Grid Scale Factor: 0.99993712		Convergence: -1°10'09.36"
Bearing To: MID004	Is: N85°22'02.51W	Distance Is: 2810.81'


Monument Description / Location



CINCINNATI - DAYTON ROAD



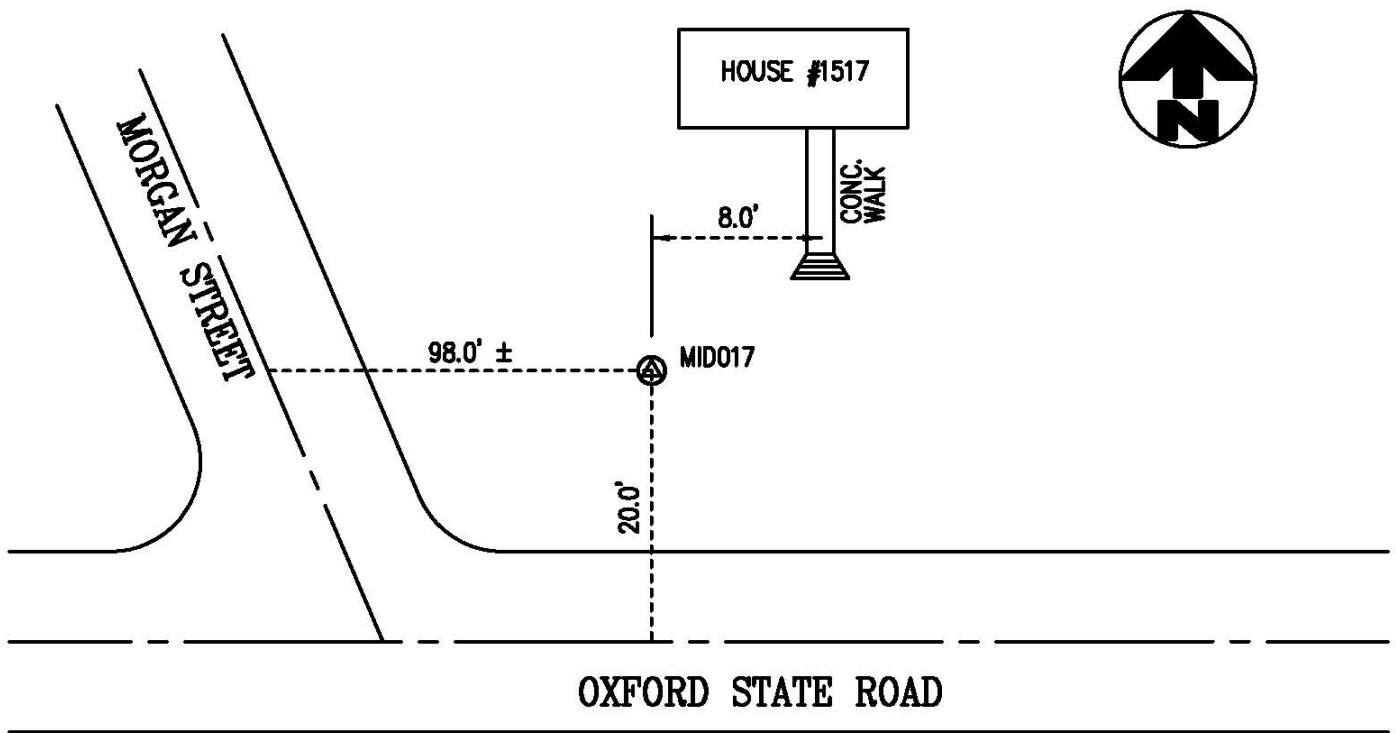
The mark is a concrete monument with a bronze cap located in the median of Oxford State Road, approximately 90 feet east of the centerline of Cincinnati-Dayton Rd.. The mark is located 25.2 feet from a traffic light mast arm pole to the west, 3.0 feet from the north back of curb of median and 9.0 feet north of south back of curb of median.

State Plane Coordinates (Metric)	Note: Horizontal datum is based on NAD 83/1986 (Pre HARN) in conformance with the Butler County Engineers First Order Control Monumentation	 KLEINGERS & ASSOCIATES ENGINEERS AND SURVEYORS 6305 Centre Park Drive, West Chester, OH 45069 (513) 779-7851 • FAX (513) 779-7852
NAD 83 / NAVD 88		
North: 165224.023		
East: 441459.388		
Elev.: 202.516		


CITY OF MIDDLETOWN CONTROL MONUMENT RECORD

Monument No.	Geographic Coordinates	State Plane Coordinates (U.S. Feet)
MID017	NAD '83	NAD '83 / NAVD 88
	Lat: 39°28'40.90107"	North: 543972.84
	Long: 84°24'05.07894"	East: 1431834.50
	Height: 537.80	Elev: 647.87
Grid Scale Factor: 0.99993724		Convergence: -1°12'23.34"
Bearing To: MID018	Is: N67°49'31.67"W	Distance Is: 2132.19'

Monument Description / Location



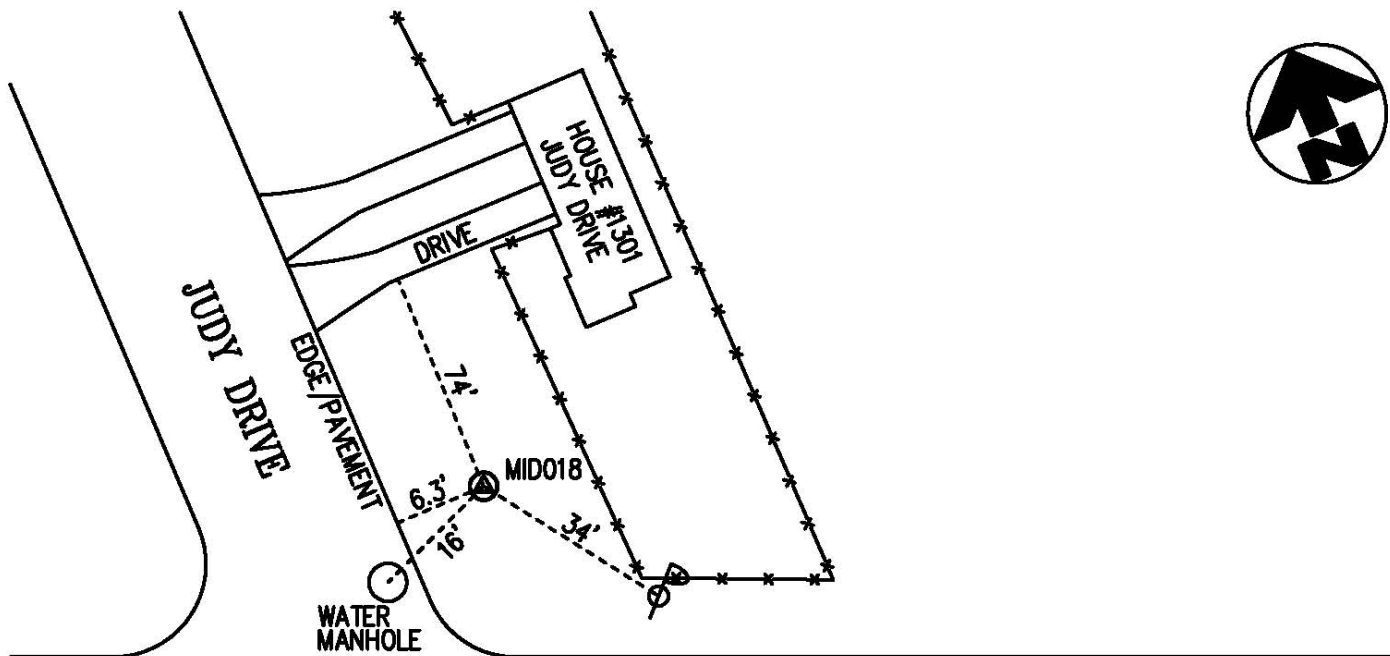
The mark is a concrete monument with a bronze cap located on the north side of Oxford State Road, approximately 98 feet east of the centerline of Morgan Street. The mark is located 20.0 feet from the centerline of Oxford State Road and 8.0 feet west of the southerly extension of the centerline of a concrete walk to house #1517 Oxford State Road.

State Plane Coordinates (Metric)	Note: Horizontal datum is based on NAD 83/1986 (Pre HARN) in conformance with the Butler County Engineers First Order Control Monumentation	
NAD 83 / NAVD 88		
North: 165803.253		
East: 436424.030		
Elev.: 197.471		

CITY OF MIDDLETOWN CONTROL MONUMENT RECORD


Monument No.	Geographic Coordinates	State Plane Coordinates (U.S. Feet)
MID018	NAD '83	NAD '83 / NAVD 88
	Lat: 39°28'48.44166"	North: 544777.59
	Long: 84°24'30.47265"	East: 1429860.01
	Height: 527.75	Elev: 637.79
Grid Scale Factor: 0.99993730		Convergence: -1°12'39.45"
Bearing To: MID017	Is: S67°49'31.67"E	Distance Is: 2132.19'

Monument Description / Location



OXFORD STATE ROAD

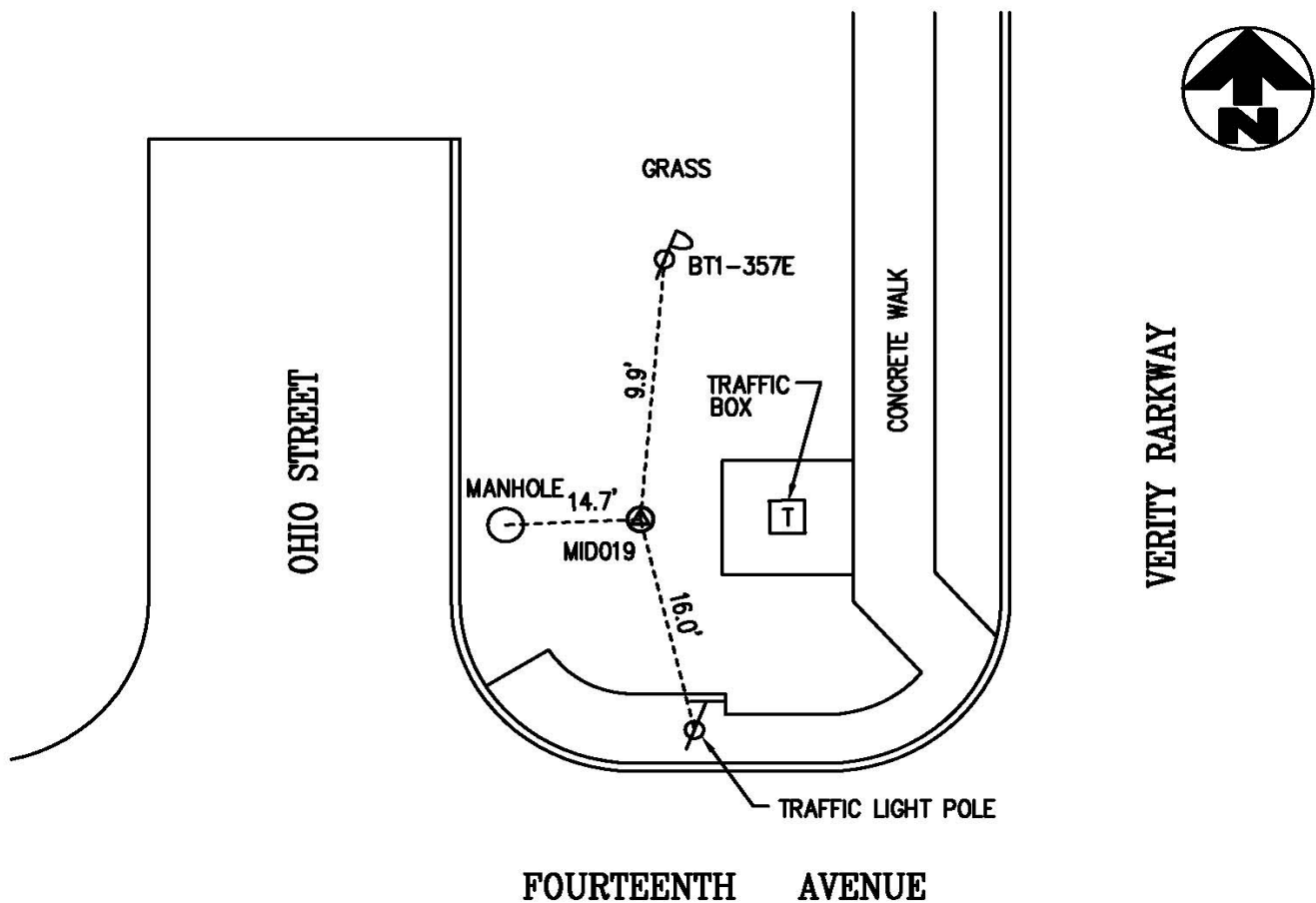
The mark is a concrete monument with a bronze cap located on the north side of Oxford State Road, located 6.3 feet east of the east edge of pavement of Judy Drive, 16 feet from a water manhole to the southwest, 34' from a power pole to the southeast and 74' south of the south edge of the southernmost drive to house #1301 Judy Drive.

State Plane Coordinates (Metric)	Note: Horizontal datum is based on NAD 83/1986 (Pre HARN) in conformance with the Butler County Engineers First Order Control Monumentation	
NAD 83 / NAVD 88		
North: 166048.541		
East: 435822.204		
Elev.: 194.400		


CITY OF MIDDLETOWN CONTROL MONUMENT RECORD

Monument No.	Geographic Coordinates	State Plane Coordinates (U.S. Feet)
MID019	NAD '83	NAD '83 / NAVD 88
	Lat: 39°30'06.57392"	North: 552698.02
	Long: 84°24'40.81101"	East: 1429216.93
	Height: 533.71	Elev: 643.65
Grid Scale Factor: 0.99993800	Convergence: -1°12'46.01"	
Bearing To: MID020	Is: S15°44'48.43"E	Distance Is: 1115.00'

Monument Description / Location



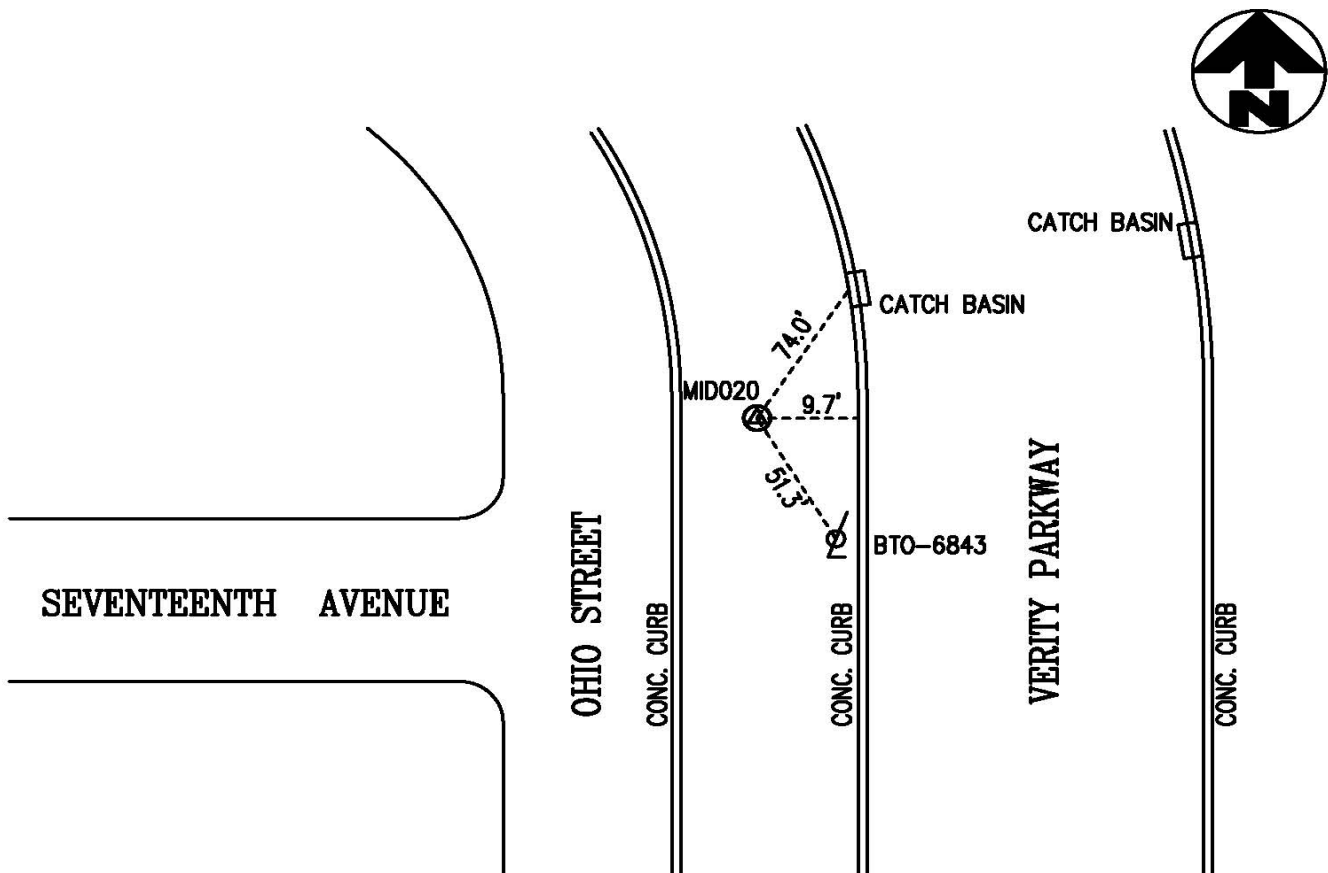
The mark is a concrete monument with a bronze cap located on the north side of Fourteenth Avenue, the west side of Verity Parkway and the east side of Ohio Street. The mark is located 14.7 feet east of a manhole behind the east back of curb of Ohio Street, 16 feet from a traffic light pole to the south and 9.9' from a power pole to the north (BT1-357E).

State Plane Coordinates (Metric)	Note: Horizontal datum is based on NAD 83/1986 (Pre HARN) in conformance with the Butler County Engineers First Order Control Monumentation	 KLEINGERS & ASSOCIATES ENGINEERS AND SURVEYORS 6305 Centre Park Drive, West Chester, OH 45069 (513) 779-7851 • FAX (513) 779-7852
NAD 83 / NAVD 88		
North: 168462.694		
East: 435626.191		
Elev.: 196.186		


CITY OF MIDDLETOWN CONTROL MONUMENT RECORD

Monument No.	Geographic Coordinates	State Plane Coordinates (U.S. Feet)
MID020	NAD '83	NAD '83 / NAVD 88
	Lat: 39°29'56.03276"	North: 551624.87
	Long: 84°24'36.66169"	East: 1429519.52
	Height: 532.00	Elev: 641.96
Grid Scale Factor: 0.99993790		Convergence: -1°12'43.38"
Bearing To: MID019	Is: N15°44'48.43"W	Distance Is: 1115.00'

Monument Description / Location



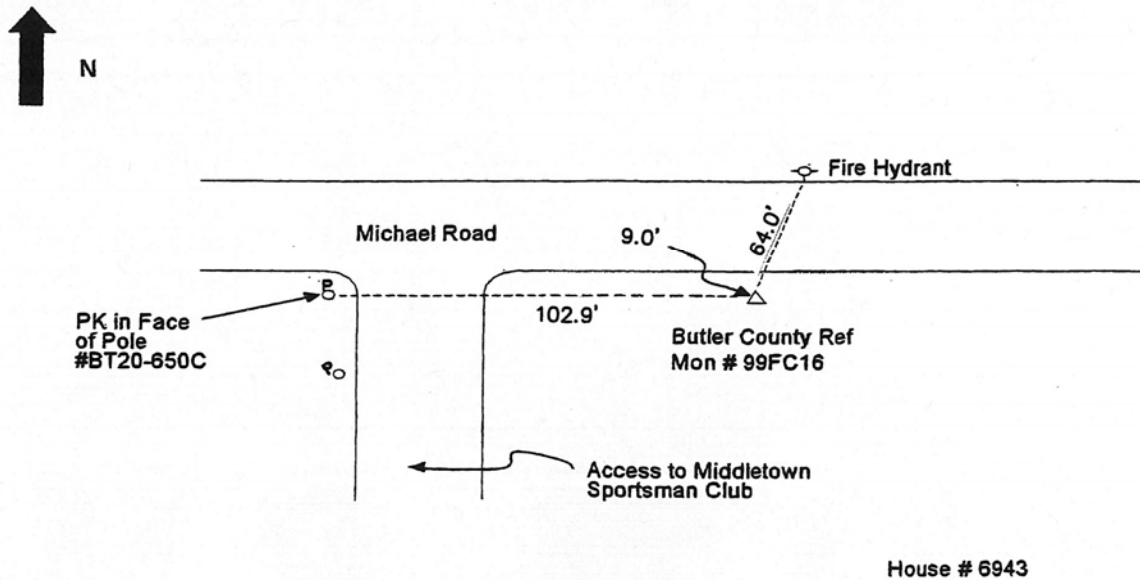
The mark is a concrete monument with a bronze cap located in the median between Verity Parkway and Ohio Street, just north of Seventeenth Avenue. The mark is located 74.0 feet from a catch basin to the northeast, 9.7 feet from the west back of curb of Verity Parkway and 51.3' from a power pole to the southeast (BTO-6843).

State Plane Coordinates (Metric)	Note: Horizontal datum is based on NAD 83/1986 (Pre HARN) in conformance with the Butler County Engineers First Order Control Monumentation	 KLEINGERS & ASSOCIATES ENGINEERS AND SURVEYORS 6305 Centre Park Drive, West Chester, OH 45069 (513) 779-7851 • FAX (513) 779-7852
NAD 83 / NAVD 88		
North: 168135.597		
East: 435718.422		
Elev.: 195.671		


CITY OF MIDDLETOWN CONTROL MONUMENT RECORD

Monument No.	Geographic Coordinates	State Plane Coordinates (U.S. Feet)
99FC16	NAD '83	NAD '83 / NAVD 88
	Lat: 39°32'48.76189"	North: 569206.67
	Long: 84°25'42.52773"	East: 1424731.05
	Height: 787.64	Elev: 897.38
Grid Scale Factor:	0.99993992	Convergence: -1°13'25.17"
Bearing To: NA	Is: NA	Distance Is NA

Monument Description / Location



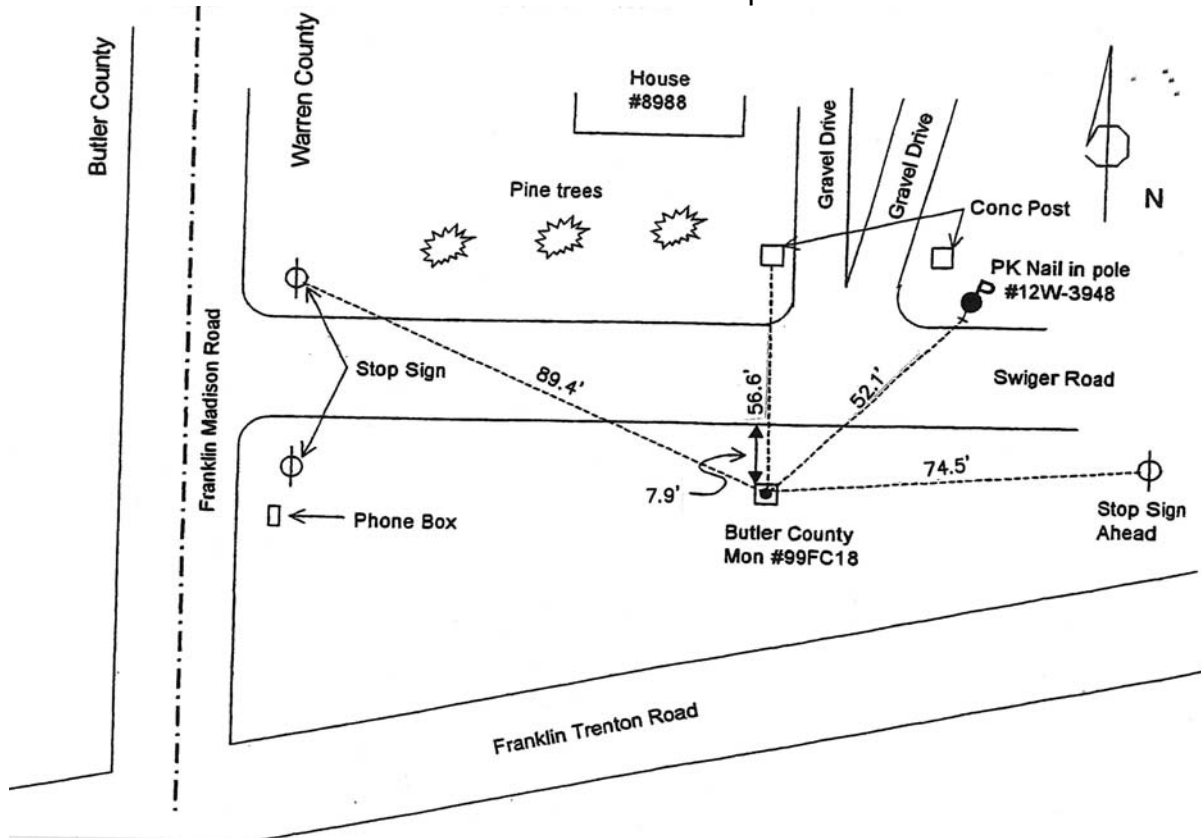
The mark is a concrete monument with a brass disk "Butler County Engineers Ref. Monument" stamped "99FC16" located on the south side of Michael Road, approximately 1.3 miles west of Trenton-Franklin Road. The mark is located 9.0 feet south of the south edge of pavement of Michael Road and 102.9 feet from a power pole (BT20-650C) to the west.

State Plane Coordinates (Metric) NAD 83 / NAVD 88 North: 173494.540 East: 434258.892 Elev.: 273.521	Note: Horizontal datum is based on NAD 83/1986 (Pre HARN) in conformance with the Butler County Engineers First Order Control Monumentation	 KLEINGERS & ASSOCIATES <small>ENGINEERS AND SURVEYORS 6305 Centre Park Drive, West Chester, OH 45069 (513) 779-7851 • FAX (513) 779-7852</small>
--	---	---


CITY OF MIDDLETOWN CONTROL MONUMENT RECORD

Monument No.	Geographic Coordinates	State Plane Coordinates (U.S. Feet)
99FC18	NAD '83	NAD '83 / NAVD 88
	Lat: 39°33'17.03991"	North: 571685.15
	Long: 84°21'50.28484"	East: 1442977.75
	Height: 555.75	Elev: 665.54'
Grid Scale Factor: 0.99994031		Convergence: -1°10'57.81"
Bearing To: NA	Is: NA	Distance Is: NA

Monument Description / Location



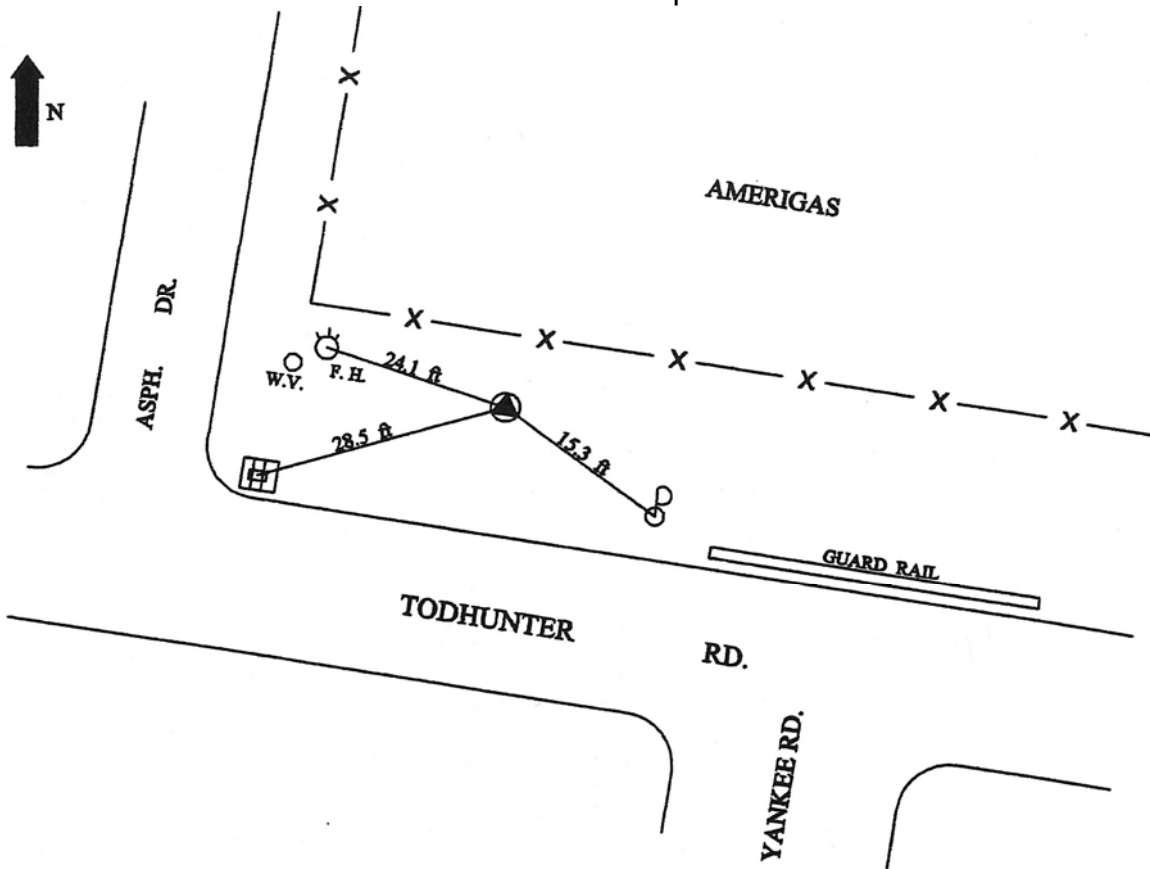
The mark is a concrete monument with a brass disk "Butler County Engineers Ref. Monument" stamped "99FC18" located on the south side of Swiger Road, east of the intersection of Franklin Madison Road and Swiger Road. The mark is located 7.9 feet south of the south edge of pavement and 52.1 feet from a power pole (12W-3948) to the northeast.

State Plane Coordinates (Metric)	Note: Horizontal datum is based on NAD 83/1986 (Pre HARN) in conformance with the Butler County Engineers First Order Control Monumentation	 KLEINGERS & ASSOCIATES ENGINEERS AND SURVEYORS 6305 Centre Park Drive, West Chester, OH 45069 (513) 779-7851 • FAX (513) 779-7852
NAD 83 / NAVD 88		
North: 174249.981		
East: 439820.497		
Elev.: 202.857		


CITY OF MIDDLETOWN CONTROL MONUMENT RECORD

Monument No.	Geographic Coordinates	State Plane Coordinates (U.S. Feet)
99FC67	NAD '83	NAD '83 / NAVD 88
	Lat: 39°27'33.82100"	North: 537111.10
	Long: 84°23'18.64138"	East: 1435332.82
	Height: 544.79	Elev: 654.97
Grid Scale Factor: 0.99993676		Convergence: -1°11'53.87"
Bearing To: NA	Is: NA	Distance Is NA

Monument Description / Location



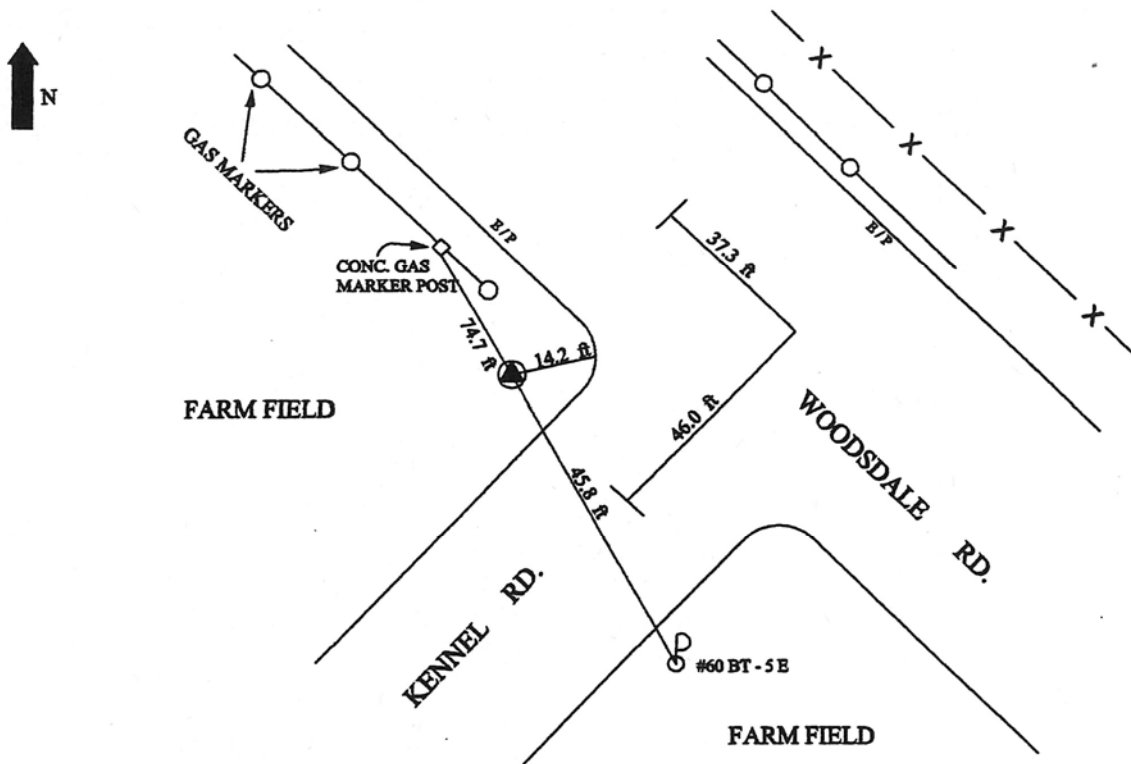
The mark is a concrete monument with a brass disk "Butler County Engineers Ref. Monument" stamped "99FC67" located on the north side of Todhunter Road, west of the intersection of Todhunter Road and Yankee Road. The mark is located 24.1 feet from a fire hydrant to the west and 15.3 feet from a power pole to the southeast.

State Plane Coordinates (Metric)	Note: Horizontal datum is based on NAD 83/1986 (Pre HARN) in conformance with the Butler County Engineers First Order Control Monumentation	 KLEINGERS & ASSOCIATES <small>ENGINEERS AND SURVEYORS 6305 Centre Park Drive, West Chester, OH 45069 (513) 779-7851 • FAX (513) 779-7852</small>
NAD 83 / NAVD 88		
North: 163711.790		
East: 437490.319		
Elev.: 199.634		


CITY OF MIDDLETOWN CONTROL MONUMENT RECORD

Monument No.	Geographic Coordinates	State Plane Coordinates (U.S. Feet)
99FC68	NAD '83	NAD '83 / NAVD 88
	Lat: 39°27'43.90384"	North: 538504.70
	Long: 84°27'02.79740"	East: 1417778.65
	Height: 515.33	Elev: 625.34
Grid Scale Factor: 0.99993683		Convergence: -1°14'16.10"
Bearing To: NA	Is: NA	Distance Is: NA

Monument Description / Location



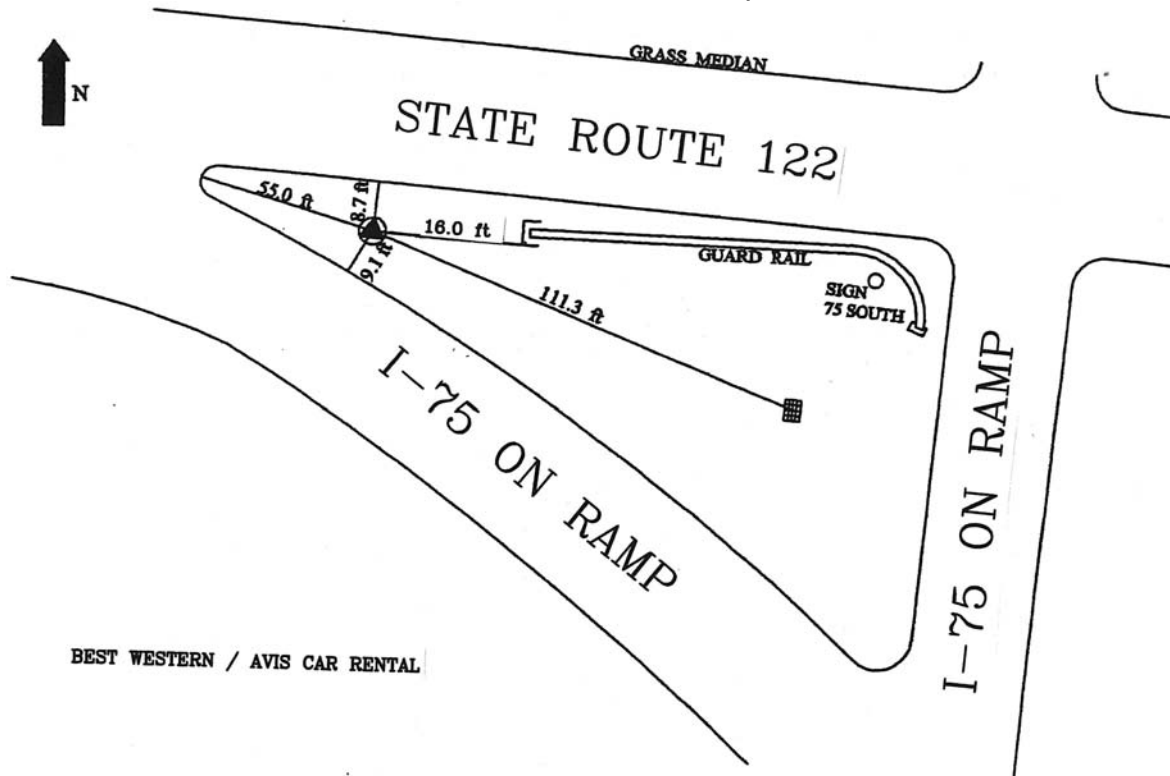
The mark is a concrete monument with a brass disk "Butler County Engineers Ref. Monument" stamped "99FC68" located on the northwest corner of Woodsdale Road and Kennel Road. The mark is located 46.0 feet southwest of the centerline of Woodsdale Road, 37.3 feet northwest of the centerline of Kennel Road and 45.8 feet from a power pole to the southeast (60 BT-5E).

State Plane Coordinates (Metric)	Note: Horizontal datum is based on NAD 83/1986 (Pre HARN) in conformance with the Butler County Engineers First Order Control Monumentation	 KLEINGERS & ASSOCIATES <small>ENGINEERS AND SURVEYORS 6305 Centre Park Drive, West Chester, OH 45069 (513) 779-7851 • FAX (513) 779-7852</small>
NAD 83 / NAVD 88		
North: 164136.560		
East: 432139.797		
Elev.: 190.605		


CITY OF MIDDLETOWN CONTROL MONUMENT RECORD

Monument No.	Geographic Coordinates	State Plane Coordinates (U.S. Feet)
99FC72A	NAD '83	NAD '83 / NAVD 88
	Lat: 39°29'32.95112"	North: 548796.47
	Long: 84°19'32.23066"	East: 1453329.748
	Height: 582.56	Elev: 692.58
Grid Scale Factor: 0.99993768		Convergence: -1°09'30.21"
Bearing To: NA	Is: NA	Distance Is: NA

Monument Description / Location



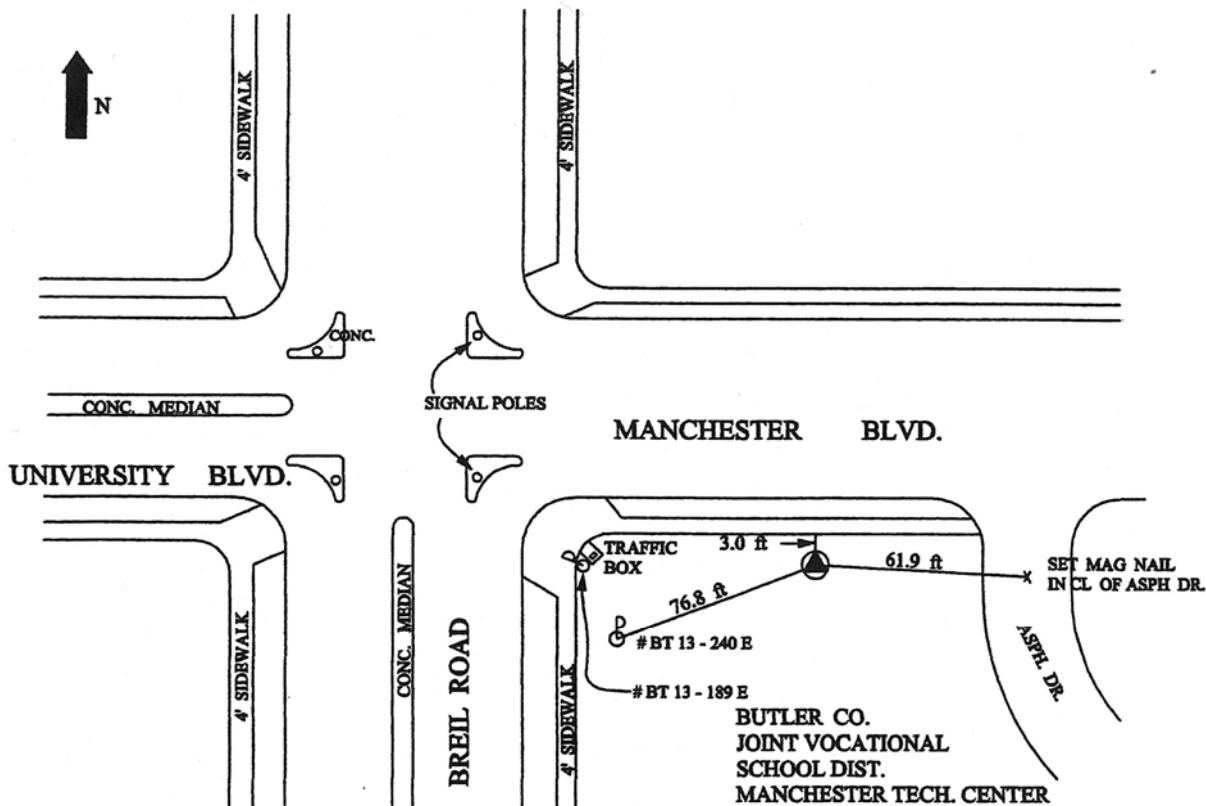
The mark is a concrete monument with a brass disk "Butler County Engineers Ref. Monument" stamped "99FC72A" located on the south side of State Route 122 in the median of the entrance ramp to southbound Interstate 75. The mark is located 8.7 feet south of the south edge of pavement of State Route 122, 9.1 feet north of the north edge of pavement of Interstate 75 entrance ramp and 16 feet from the end of a guardrail located to the east.

State Plane Coordinates (Metric)	Note: Horizontal datum is based on NAD 83/1986 (Pre HARN) in conformance with the Butler County Engineers First Order Control Monumentation	 KLEINGERS & ASSOCIATES <small>ENGINEERS AND SURVEYORS 6305 Centre Park Drive, West Chester, OH 45069 (513) 779-7851 • FAX (513) 779-7852</small>
NAD 83 / NAVD 88		
North: 167273.498		
East: 442975.793		
Elev.: 211.100		


CITY OF MIDDLETOWN CONTROL MONUMENT RECORD

Monument No.	Geographic Coordinates	State Plane Coordinates (U.S. Feet)
99FC74	NAD '83	NAD '83 / NAVD 88
	Lat: 39°31'31.53448"	North: 560936.96
	Long: 84°21'03.25324"	East: 1446441.76
	Height: 767.14	Elev: 877.04
Grid Scale Factor: 0.99993893		Convergence: -1°10'27.96"
Bearing To: MID009	Is: S86°45'58.76"E	Distance Is: 4621.71'

Monument Description / Location



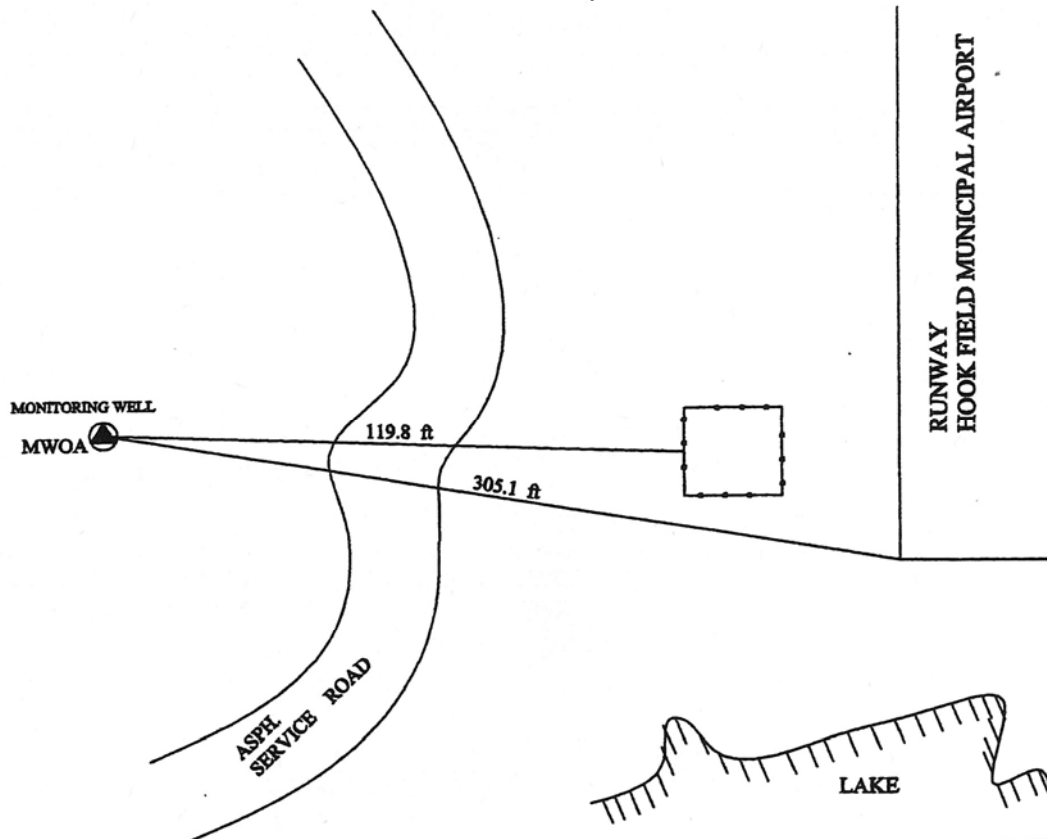
The mark is a concrete monument with a brass disk "Butler County Engineers Ref. Monument" stamped "99FC74" located on the southeast corner of the intersection of Manchester Road and Breil Boulevard. The mark is located on the south side of Manchester Road, 3.0 feet south of a concrete sidewalk and 76.8 feet from a power pole (BT13-240E) to the southwest.

State Plane Coordinates (Metric)	Note: Horizontal datum is based on NAD 83/1986 (Pre HARN) in conformance with the Butler County Engineers First Order Control Monumentation	 <p>KLEINGERS & ASSOCIATES ENGINEERS AND SURVEYORS 6305 Centre Park Drive, West Chester, OH 45069 (513) 779-7851 • FAX (513) 779-7852</p>
NAD 83 / NAVD 88		
North: 170973.927		
East: 440876.331		
Elev.: 267.322		


CITY OF MIDDLETOWN CONTROL MONUMENT RECORD

Monument No.	Geographic Coordinates	State Plane Coordinates (U.S. Feet)
MWOA	NAD '83	NAD '83 / NAVD 88
	Lat: 39°31'33.96146"	North: 561499.28
	Long: 84°24'17.69686"	East: 1431214.74
	Height: 529.29	Elev: 639.16
Grid Scale Factor: 0.99993896	Convergence: -1°12'31.34"	
Bearing To: NA	Is: NA	Distance Is: NA

Monument Description / Location



The mark is a NGS Standard Control Disk, set in a large structure (monitoring well), stamped "MWO A 1995", in the Hook Field Municipal Airport. The mark is located 305.1 feet from the southwest corner of the runway and 119.8 feet from a fenced area to the east.

State Plane Coordinates (Metric)	Note: Horizontal datum is based on NAD 83/1986 (Pre HARN) in conformance with the Butler County Engineers First Order Control Monumentation	 KLEINGERS & ASSOCIATES <small>ENGINEERS AND SURVEYORS 6305 Centre Park Drive, West Chester, OH 45069 (513) 779-7851 • FAX (513) 779-7852</small>
NAD 83 / NAVD 88		
North: 171145.324		
East: 436235.124		
Elev.: 194.817		